

**Pushing Up Daisies:** Environmental,  
Archaeological and Forensic  
Interactions Annual Workshop  
19th -21st November 2008



# Pushing Up Daisies: Environmental, Archaeological and Forensic Interactions Annual Workshop

## Course Description

This course aims to highlight the important two-way interaction between forensic and traditional archaeological practices, such as excavations and the environment. It will also explore the impact of archaeology on the environment, and investigate issues surrounding sustainability of archaeological sites within the environment. The course will provide opportunities for discussion and debate concerning the topic of conflicts between environmental management and archaeological heritage on a regional and global scale. It will also focus on the ways in which the environment affects archaeological and forensic evidence, and how practitioners can use knowledge of natural environmental systems to aid investigations of crime and the past.

## Who should attend?

Professional archaeologists, county archaeologists, Defence Estates, military personnel, Environment Agency, forensic scientists and any others with a professional interest in the interplay between forensic and traditional archaeology and the environment.

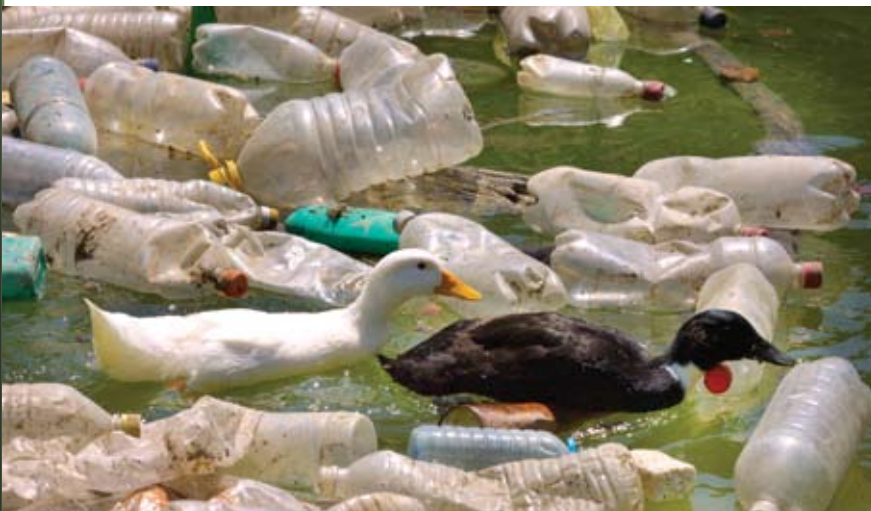
## Course Location

The course will be held at the Northford Building, Cranfield Forensic Institute, Cranfield University, Shrivenham Campus

**Course Fees:** £700

Topics that will be covered in the course include:

- Mass graves
- The effect of explosives on the environment  
Forensic soil profiling
- Aerial photography/search and location exercise
- Differential preservation and decay of bodies and artefacts in different environments
- Taphonomy – subsistence of archaeological sites
- Environmental planning (landscape archaeology)
- Environmental protection of cultural heritage sites/ “assets”
- Archaeology of past environmental disasters
- Industrial remains
- Archaeological field systems
- Sustainable archaeology vs archaeological sustainability





## 6 Key Benefits

- Unique access to expertise and facilities at the Defence Academy of the United Kingdom
- Interactive and participatory sessions and seminar groups
- Case studies to illustrate theoretical aspects
- Practical sessions, with opportunities to familiarise yourself with techniques
- Expert speakers
- Potential to develop further through Cranfield MSc courses



## Course Leaders

Tracey Temple

Tracey is a knowledgeable practitioner in the implementation of the Sustainability Appraisal Process, Environmental Management and promoting environmental awareness by developing training packages. Her extensive experience has been gained through UK and overseas whilst working with Defence Estates, Environmental Consulting and now academia. During time spent in Cyprus, Tracey worked for Defence Estates and was the driving force behind a Green Waste recycling project. Key targets involved raising environmental awareness, diverting waste from local landfill and returning economic benefits to the community. Tracey was also involved with the Environmental Management Plan (EMP) for the Akrotiri Peninsula.

Dr Julieanna Powell-Turner

Julieanna is an experienced environmental scientist with over 17 years UK and overseas experience. Her expertise includes the development of International, European and National environmental and waste strategies. Since joining Cranfield University, Julieanna has successfully set up the Environmental Science Group in response to the MoD and wider Government drive towards Environmental Protection and Sustainable Development. This work reflects the multidisciplinary nature of the subject and seeks to maintain a fresh and current approach, encompassing the latest scientific, theoretical and technological developments. She has worked successfully with a range of stakeholders including the private sector, governments and academic and community groups.

Dr Anna Williams

Dr Anna Williams is the Lecturer in Forensic Anthropology at Cranfield University. She holds an MA (Oxon) in Archaeology and Anthropology and an MSc in Forensic Anthropology. Her PhD from the University of Sheffield pioneered new techniques for estimating time since fracture for the detection of child abuse, the distinction between ante-, peri- and post-mortem trauma, and for identifying unknown human remains. She has substantial experience of police investigations and scenes of crime, has worked for West Yorkshire Police as a forensic expert and continues to work as a consultant for Kenyan International Emergency Services. Anna's research interests include the environmental impact of mass graves after pandemic, holistic mass disaster management, and a variety of human decomposition studies.

Karl Harrison

Karl Harrison is a fellow of Cranfield Forensic Institute and is a Lead Researcher in Ecology for LGC Forensics. He has experience of using scientific techniques to detect the presence of buried human remains. His research interests include the use of remote sensing for the location of archaeological burials and the interpretation of burnt remains both in archaeological and forensic contexts.

